

# Passenger Differentiation

---

Wilfried Covent  
Chairman ACI EUROPE Aviation Security Committee  
28 June 2018



# Evolution of Security Measures



1977 – Mogadishu	1989 – Lockerbie	2001 “9/11”	2006 – Liquids Plot	2009 – Detroit	2015 – Inspire 13	2016 Landside	2017 PEDs
<ul style="list-style-type: none"> <li>Passenger Screening</li> <li>Cabin Baggage Screening</li> </ul>	<ul style="list-style-type: none"> <li>Check of Hold Baggage</li> <li>Baggage Reconciliation</li> <li>Passenger Screening</li> <li>Cabin Baggage Screening</li> </ul>	<ul style="list-style-type: none"> <li>Aircraft and vehicle checks (APIS, No Fly)</li> <li>Cockpit Doors reinforced</li> <li>Continuous baggage surveillance</li> <li>100% Staff Screening</li> <li>100% Hold Baggage Screening</li> <li>100% Baggage Reconciliation</li> <li>Passenger Screening</li> <li>Cabin Baggage Screening</li> </ul>	<ul style="list-style-type: none"> <li>Ban on liquids</li> <li>Aircraft and vehicle checks (APIS, No Fly)</li> <li>Cockpit Doors reinforced</li> <li>Continuous baggage surveillance</li> <li>100% Staff Screening</li> <li>100% Hold Baggage Screening</li> <li>100% Baggage Reconciliation</li> <li>Passenger Screening</li> <li>Cabin Baggage Screening</li> </ul>	<ul style="list-style-type: none"> <li>Security Scanners</li> <li>Second screening US-flights</li> <li>Ban on liquids</li> <li>Aircraft and vehicle checks (APIS, No Fly)</li> <li>Cockpit Doors reinforced</li> <li>Continuous Baggage surveillance</li> <li>100% Staff Screening</li> <li>100% Hold Baggage Screening</li> <li>100% Baggage Reconciliation</li> <li>Passenger Screening</li> <li>Cabin Baggage Screening</li> </ul>	<ul style="list-style-type: none"> <li>Explosive Detection (ETD/ EDS)</li> <li>Security Scanners</li> <li>Second screening US-flights</li> <li>Ban on liquids</li> <li>Aircraft and vehicle checks (APIS, No Fly)</li> <li>Cockpit Doors reinforced</li> <li>Continuous Baggage surveillance</li> <li>100% Staff Screening</li> <li>100% Hold Baggage Screening</li> <li>100% Baggage Reconciliation</li> <li>Passenger Screening</li> <li>Cabin Baggage Screening</li> </ul>	<ul style="list-style-type: none"> <li>Landside security mitigation measures</li> <li>Explosive Detection (ETD/ EDS)</li> <li>Security Scanners</li> <li>Second screening US-flights</li> <li>Ban on liquids</li> <li>Aircraft and vehicle checks (APIS, No Fly)</li> <li>Cockpit Doors reinforced</li> <li>Continuous Baggage surveillance</li> <li>100% Staff Screening</li> <li>100% Hold Baggage Screening</li> <li>100% Baggage Reconciliation</li> <li>Passenger Screening</li> <li>Cabin Baggage Screening</li> </ul>	<ul style="list-style-type: none"> <li>Pax interviews</li> <li>Aircraft protection</li> <li>Gate screening</li> <li>Landside security mitigation</li> <li>Explosive Detection (ETD/ EDS)</li> <li>Security Scanners</li> <li>Second screening US-flights</li> <li>Ban on liquids</li> <li>Aircraft and vehicle checks (APIS, No Fly)</li> <li>Cockpit Doors reinforced</li> <li>Continuous Baggage surveillance</li> <li>100% Staff Screening</li> <li>100% Hold Baggage Screening</li> <li>100% Baggage Reconciliation</li> <li>Passenger Screening</li> <li>Cabin Baggage Screening</li> </ul>

# Legal Framework on aviation security



# Same Security Regulations.....



Tiree Airport  
8,500 pax



Heathrow Airport  
78m pax



# Threats to Civil Aviation

- Chemical, Biological
- MANPADS
- Insider threat
- Landside attacks
- Cyber attacks
- Drones
- Non-metallic IED
- Clever concealment on body or in PEDs etc
- Inbound flight security



# Challenges

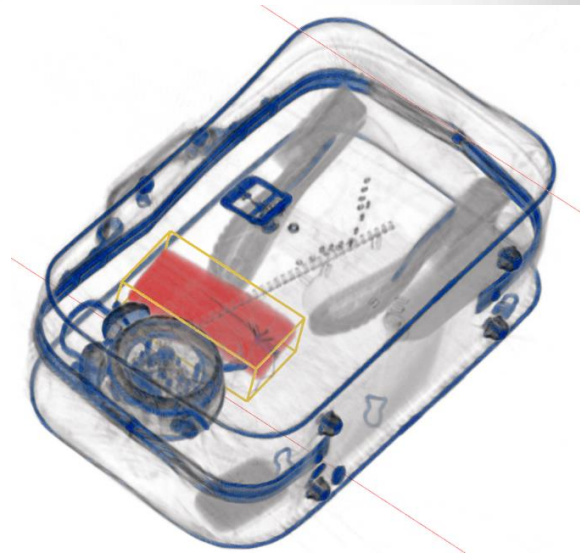
- Passenger throughput – Pax Experience



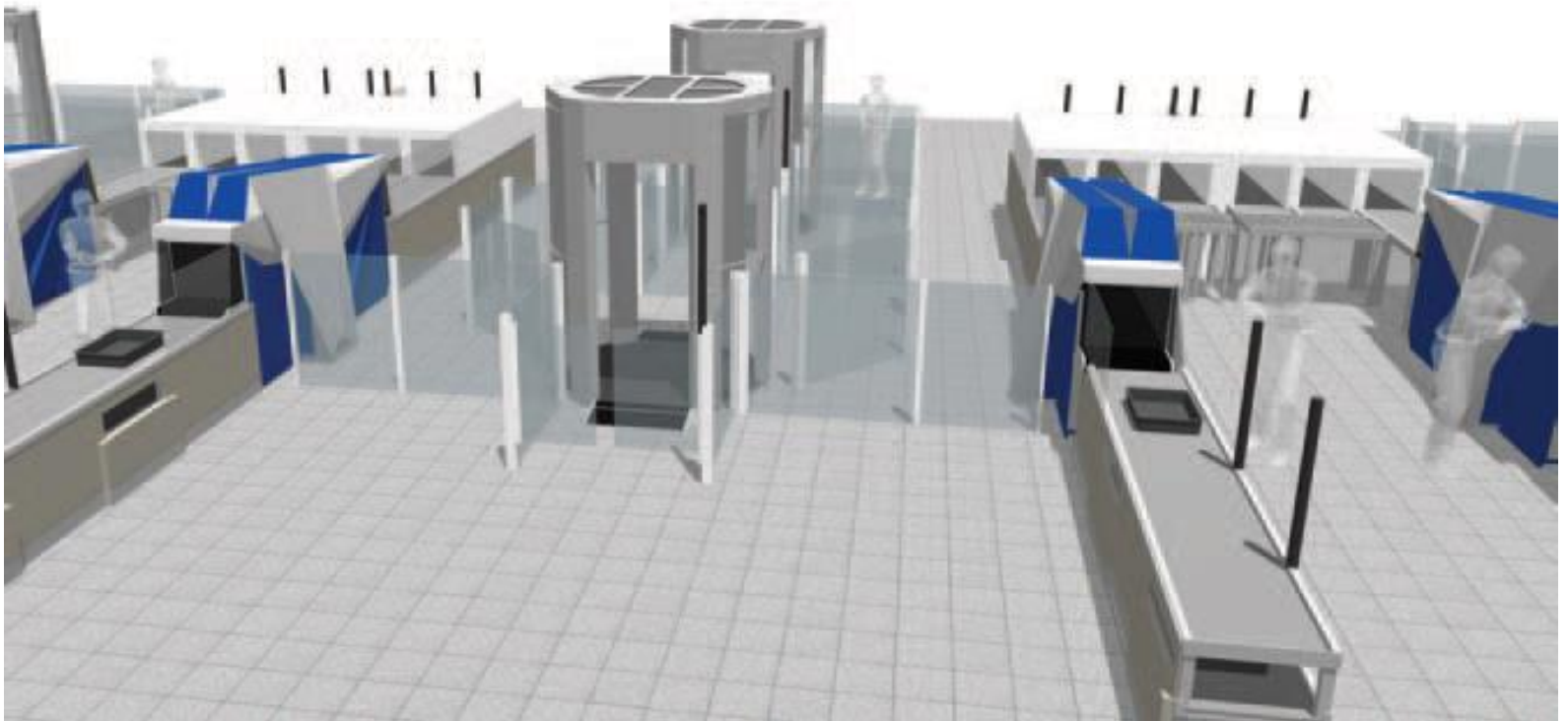
# Challenges

- Revise the current system of passenger security at airports
- Find quicker and better answers to security challenges
- Align European positions with global requirements

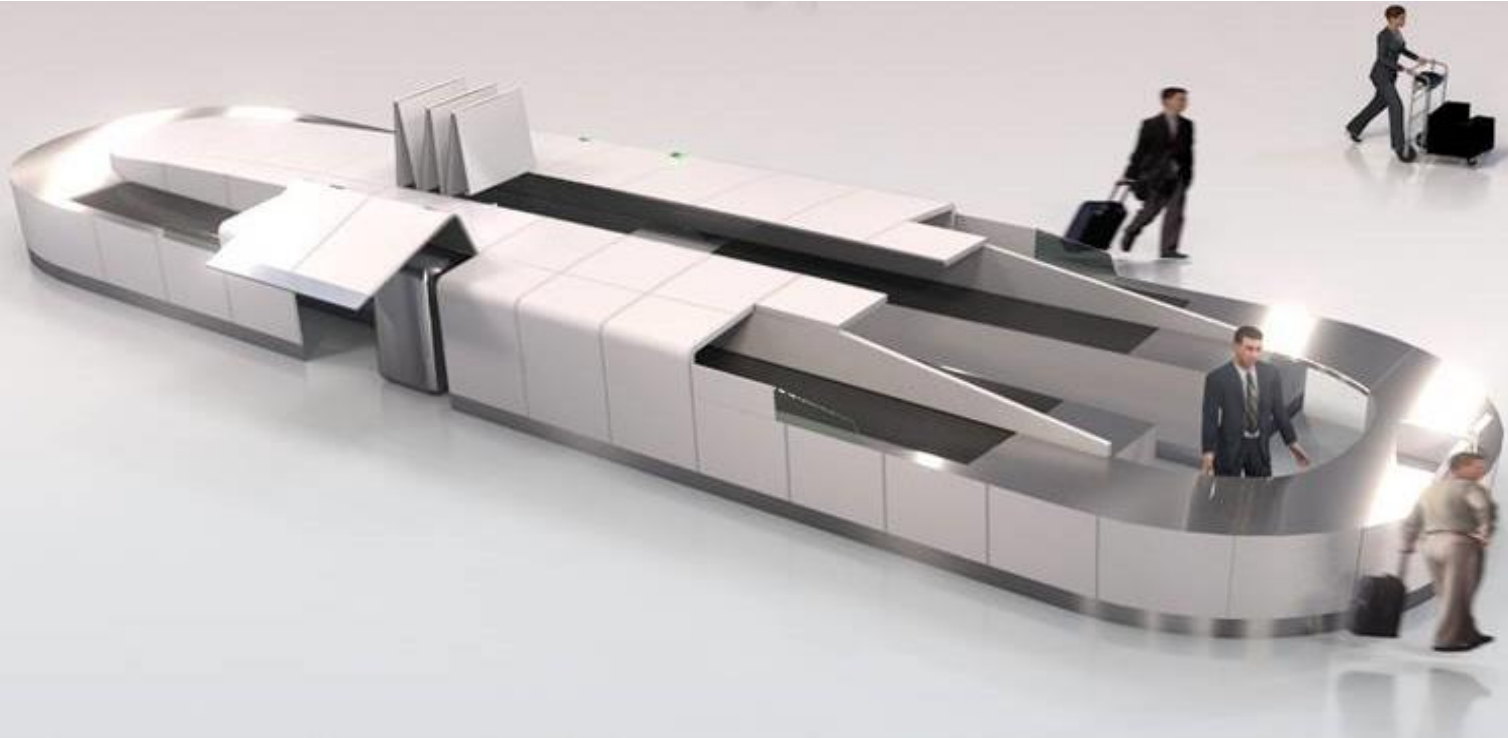
# Challenges











# Aviation security



# Aviation security

## Passengers & bags flow



# Challenges

## How to design a sustainable, resilient and innovative system of Aviation Security Screening?

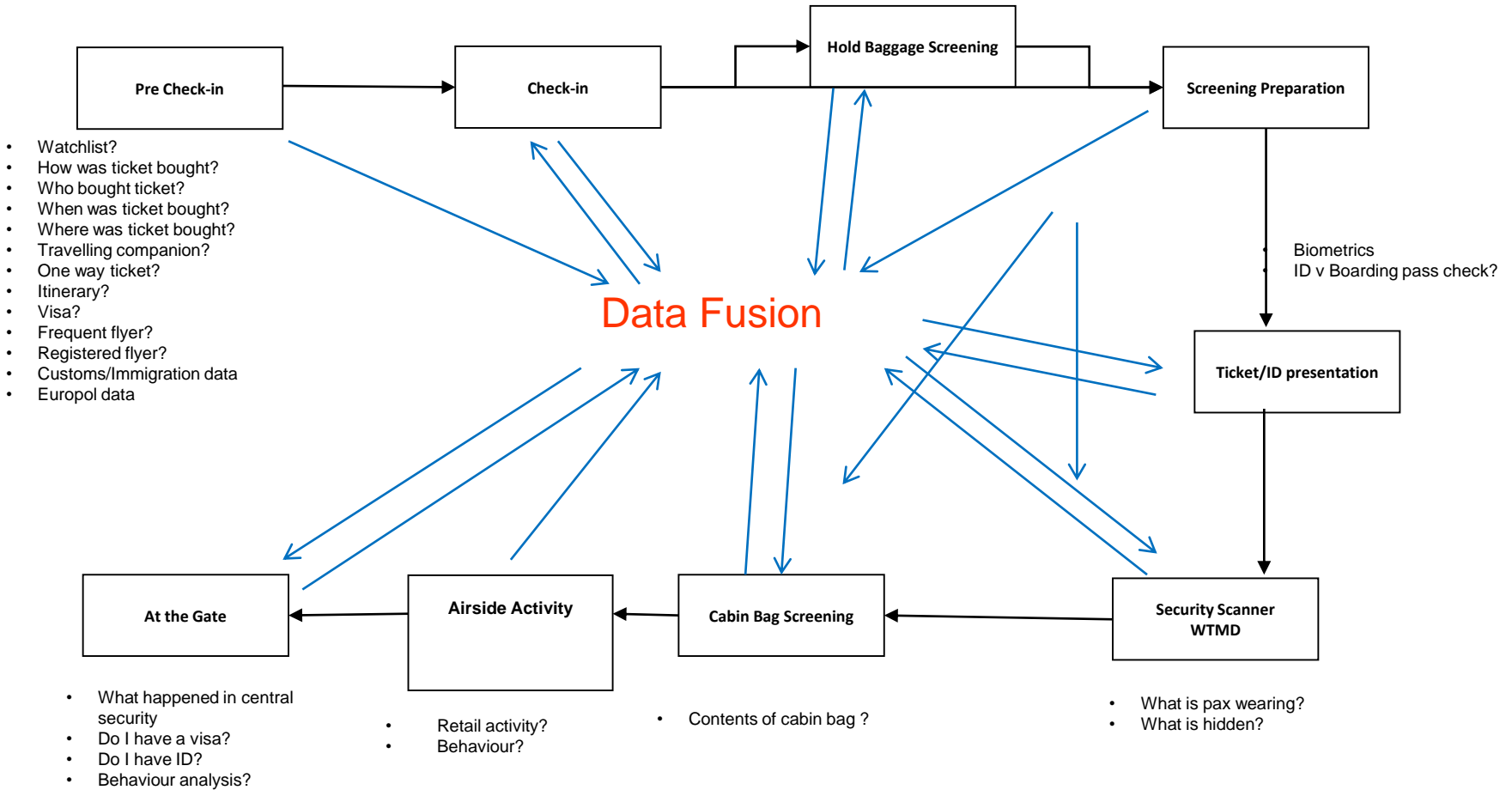
- **Balancing** of data management, intelligence and physical checks
- **Shift focus to “Bad People”** instead of “Bad Objects”
- **Differentiation of passenger groups** **without discrimination**
- **Use of innovative approaches** such as behaviour analysis, biometrics and "Trusted Traveller" programmes
- **Performance improvement** through variation and unpredictable alternation
- **More innovation**, more incentives to test alternative systems in real airport operations
- Innovative **technology**

# Data Fusion

- Checking in bags?
- Type of cabin bag?
- Clothing appropriate?
- Behaviour analysis?

- Bag to Level 3?

- Signs of nervousness?
- Avoiding attention?
- Behaviour Analysis?



# Passenger Differentiation

## Considerations:

- Known traveller programmes
- Watch list matching & predictive risk profiles
- Group based differentiation of passengers
- Airport real-time assessment of passengers

## Challenges and Way Ahead:

- Further work required!
- Proof of concept
- Proof of practice



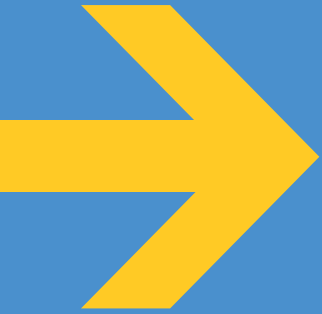
# What Next ?

- International collaboration
- European Commission
- Industry-led risk-based security initiatives – ACI-IATA Smart Security
- Review regulations
- One stop security
- Industry-led initiatives:
  - ACI EUROPE Joint Operational Working Groups
  - Airports trials

# Conclusion

- **Better passenger experience**
  - Targeted verifications
- **Cost efficiency**
  - Better allocation of staff
- **Enhanced capacity**
  - Completion of measures within few seconds
- **High security level**
  - Increased knowledge about passengers





# THANK YOU

[www.aci-europe.org](http://www.aci-europe.org)

[www.airportcarbonaccreditation.org](http://www.airportcarbonaccreditation.org)

